

Setel PowerLine Installation Process 1



Emergency 220v Electrical Circuit



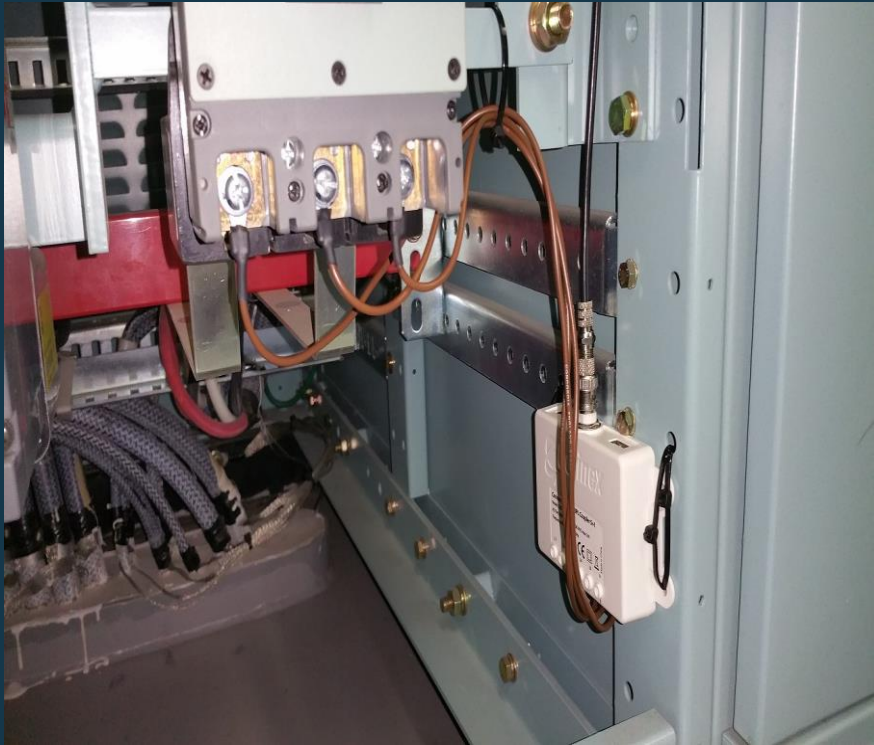
Permanent Gateway Vessel Master Unit



Connecting the 5+1 Coupler onto the Breaker

Setel Vessel Master Unit install – Engine Control Room (ECR)

Setel PowerLine Installation Process 2



Connection of 5 + 1 Coupler complete

Setel Headend install – Engine Control Room (ECR)



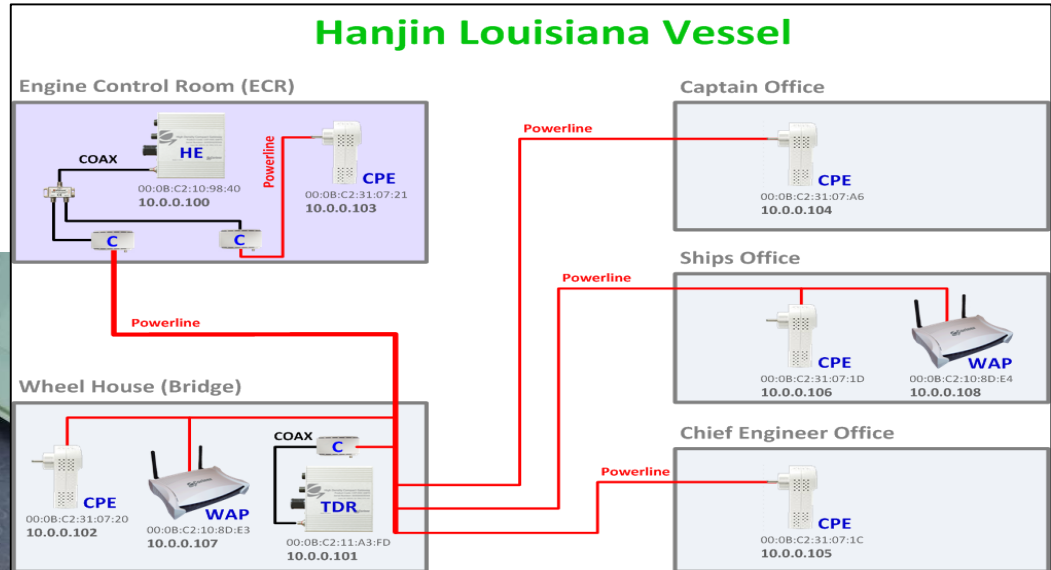
Coaxial connection from Gateway
into Coupler



Gateway, Couplers and Coax in place.

Setel PowerLine Installation Process 3

Topology	IP address	Down	Up	Children	Level	Parent MAC	Node Type	Occurrence	Location
00:0B:C2:10:98:40	10.0.0.100	0	0	5	0	-	Head End	111/111	ECR_MASTER
00:0B:C2:11:A3:FD	10.0.0.101	130	140	3	1	00:0B:C2:10:98:40	Relay Node	103/111	WheelHouse_Repeater
00:0B:C2:10:8D:E3	10.0.0.107	73	61	0	2	00:0B:C2:11:A3:FD	Child Node	72/111	WheelHouse_Wifi
00:0B:C2:10:8D:E4	10.0.0.108	89	49	0	2	00:0B:C2:11:A3:FD	Child Node	94/111	Ships_office_Wifi
00:0B:C2:31:07:1C	10.0.0.105	83	33	0	2	00:0B:C2:11:A3:FD	Child Node	98/111	CE_office_CPE
00:0B:C2:31:07:1D	10.0.0.106	91	74	0	1	00:0B:C2:10:98:40	Child Node	100/111	Ships_office_CPE
00:0B:C2:31:07:20	10.0.0.102	53	11	0	1	00:0B:C2:10:98:40	Child Node	86/111	WheelHouse_CPE
00:0B:C2:31:07:21	10.0.0.103	35	28	0	1	00:0B:C2:10:98:40	Child Node	104/111	ECR_CPE
00:0B:C2:31:07:A6	10.0.0.104	35	14	0	1	00:0B:C2:10:98:40	Child Node	91/111	Captain_office_CPE



Provisioning Speeds, IP Addresses and Children

Laptop with Telnetx Platform for system configuration

PLC Network Diagram including IP and MAC Addresses

Setel Headend install – Engine Control Room (ECR)